

# InfraXact™ Lab/Pro



*InfraXact™ for ground and unground samples can analyse parameters like protein, fat, moisture and fibre in food and feed products and their ingredients*

## Features and benefits

- Robust design – high reliability
- Easy to use – operator-independent
- Fast analysis time – results in less than a minute
- No sample preparation for most products – reduced operator errors and increased throughput
- Greatly improved transferability – same calibration can be used on multiple instruments
- Automatic sample identification – intelligent sample cup ensures sample data integrity (sample station required)
- LIMS compatibility – automated data import/export to in-house QC systems
- Designed for use in the laboratory or at-line

The new high-performance InfraXact™ is a monochromator-based NIR reflectance and transmittance analyser with a scanning range of 570 - 1850 nm.

InfraXact is run by ISIScan™ software. ISIScan is a user-friendly routine operations program that supports the latest calibration technologies with advanced reporting and data exchange.

The instrument requires minimum maintenance and operator training. Operation is simple: just place the sample cup in the cupholder, close the lid and analysis starts automatically. To ensure optimal sample presentation and results, a number of different cup

types can be used. InfraXact can be located virtually anywhere and operated by anyone, and still maintain very high accuracy. A network of InfraXact instruments can easily be managed and supported from a central location using the optional RINA software.

## At Line measurement

The InfraXact Pro model is dust and moisture proof and fulfills the IP65 requirement. It is operated from a built in PC with a touch-screen. An InfraXact Lab model can be upgraded to an InfraXact Pro at any time.

## Automated sample identification

Unique automated sample identification based on Radio Frequency Identification (RFID) ensures total sample control. Sample identification number and product type can be downloaded via a Sample Station to the RFID chip in the sample cup. When the sample cup is placed in the instrument, the stored data is transferred to the ISIScan user interface, eliminating the risk of transcription errors and ensuring perfect data traceability.

## Backwards compatibility

Data from the FOSS NIRSystems product range can be used in calibrations for the InfraXact.

### System description:

#### InfraXact™ Lab includes:

- 1 pcs. InfraXact Lab without PC
- 1 pcs. small sample cup
- 1 pcs. large sample cup
- 1 pcs. spare lamp
- 1 pcs. ISIScan™ software
- 1 pcs. small sample cup holder
- 1 pcs. power supply
- 1 pcs. USB cable
- 1 pcs. User Manual + Quick Guide
- 1 pcs. Test Report
- 1 pcs. brush
- 1 pcs. power cable 230V
- 1 pcs. power cable 110V
- 1 pcs. Allen key 3mm for lamp replacement,
- 1 pcs. Checkcell
- 1 pcs. PV standard

#### InfraXact™ Pro Kit:

- 1 pcs PC with touch screen
- 1 pcs power supply
- 1 pcs supporting arm with ready-installed cables, etc,
- 1 pcs stylus for use with touch screen

#### Accessories:

- Checkcell, empty
- WinISI™ 4 calibration development software
- Plastic bag RFID Adapter
- See pictures

### Technical data:

- Wavelength range: 570 - 1850 nm
- Analysis time: 60 seconds with 7 independent sub-samples
- Detector: Si 570 - 1100 nm, InGaAs: 1100 - 1850 nm
- Operating temperature: 0 - 40°C
- Voltage input: 100 - 240V AC, 50/60Hz
- Random Vibrations: 0.04 gRMS at 10 – 100 Hz according to RVA 016  
0.27 gRMS at 5 – 1250 Hz according to FOSS internal standard (more info available on request)

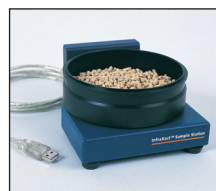
#### InfraXact Lab

- Dimensions (w × d × h): 300 × 500 × 270 mm
- Weight: 18 kg

#### InfraXact Pro (InfraXact Lab with Pro kit fitted)

- Dimensions (w × d × h): 320 × 560 × 680 mm
- Weight: 25 kg
- Display: 12.1" SVGA touch-screen
- Interfaces: USB, RS-232, Ethernet RJ 45
- Protection class: IP 65

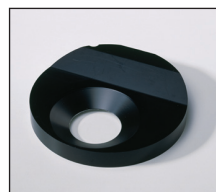
To comply with IP 65, the Pro model has to be installed by a qualified electrician. Earth connections required.



**Sample station**  
Featuring "intelligent" sample cup.



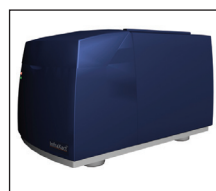
**Petri dish holder 58 mm Ø.**  
**Petri dish holder 89 mm Ø.**



**Slurry cup**  
Suitable for homogenous, sticky samples such as caramel.



**Stainless steel lid for small cup.**  
**Stainless steel lid for large cup.**



**Anti-vibration mount**  
Provides additional damping under extreme conditions.



**Large cup extension for forages**  
Cup and lid not included.



**Large sample cup**  
120 mm. Package of 1 or 5.  
**Small sample cup**  
60 mm. Package of 1 or 10.



**0.1 mm Gold reflector**  
**0.2 mm Gold reflector**  
**0.5 mm Gold reflector**  
For use with either slurry cup or small sample cup.

An international patent application covering the use of RFID to identify sample cups and to standardise instruments has been published (WO 2004/027404) and a national patent has been granted (SE 0202780-3).

# FOSS

FOSS Analytical  
Slangerupgade 69  
DK-3400 Hilleroed  
Denmark

Tel.: +45 7010 3370  
Fax: +45 7010 3371

info@foss.dk  
www.foss.dk